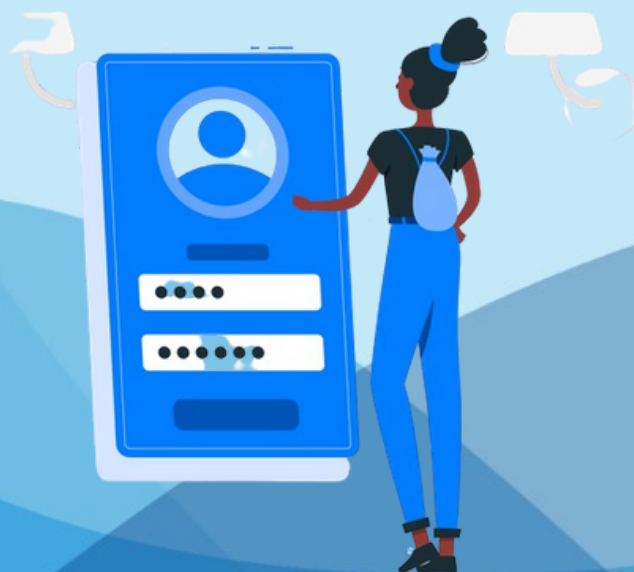




SmartSindicó

Cadastro de moradores adicionais

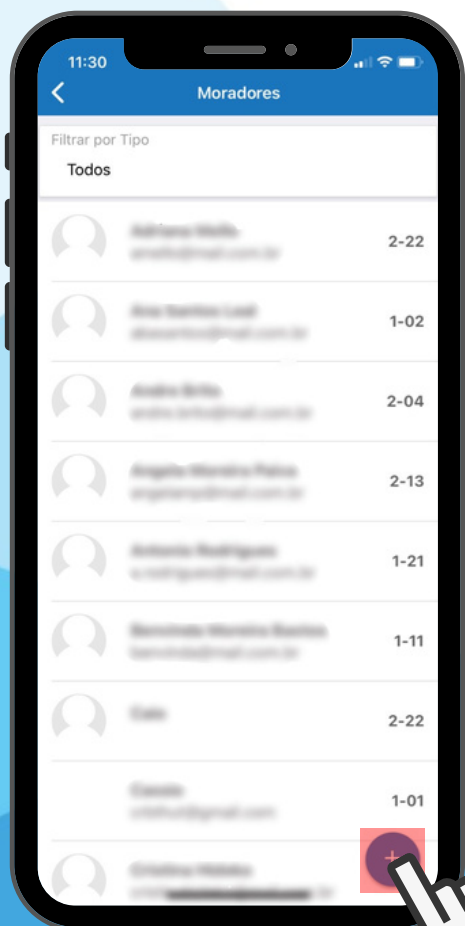


1 Abra o aplicativo clicando no ícone SmartSindicó

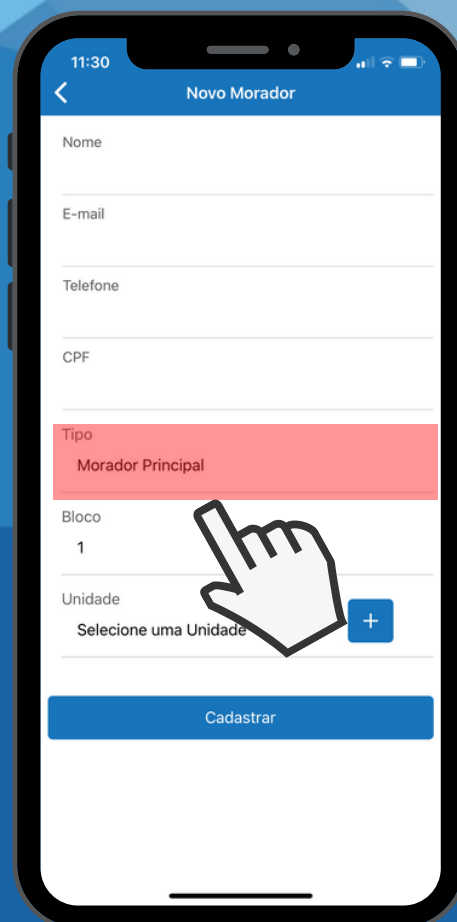
2 Clique na opção de menu, e selecione "Moradores"



SmartSindicó



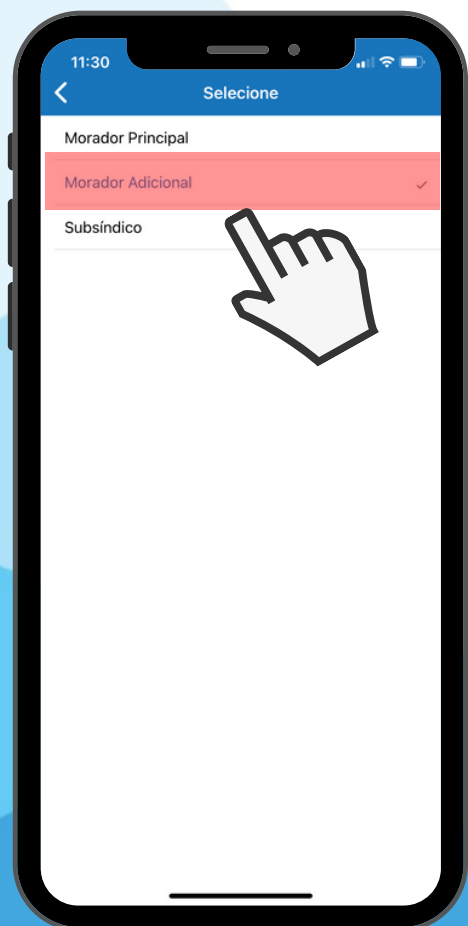
3 Clique no botão +



4 Pressione "Morador Principal"



SmartSindicó



5 Selecione "Morador Adicional"

6 Preencha com suas informações e clique em Cadastrar

